

Year 11 Information Evening

Steps for Success

14th January 2026





ATTENDANCE

WHY IS IT IMPORTANT?



EVERY SCHOOL DAY COUNTS!

Children are required by law to attend 190 school days per year. The Government states that every pupil's attendance should be at least **97%**

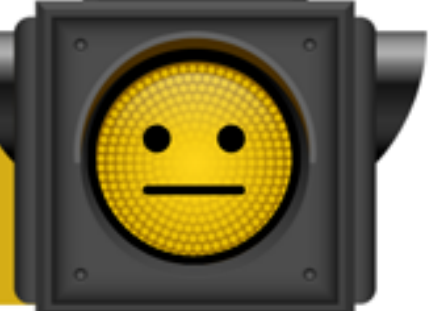
HOW DO YOU MEASURE UP?

Attendance	Days Absent	Weeks Absent	Lessons Missed
95%	9 Days	2 Weeks	50 Lessons
90%	19 Days	4 Weeks	100 lessons
85%	29 Days	6 Weeks	150 lessons
80%	38 Days	8 Weeks	200 lessons
75%	48 Days	10 Weeks	250 lessons
70%	57 Days	11.5 Weeks	290 lessons
65%	67 Days	13.5 Weeks	340 lessons

89% and below
Drastic effect on
academic achievement



95% - 90%
Cause for concern



100% - 96%
Excellent



Public Exams are on the horizon

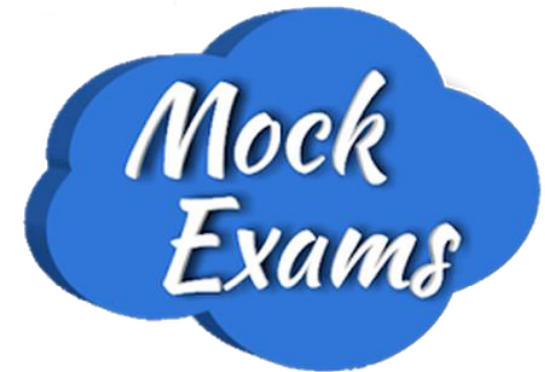
There are **88 school days** until English
GCSE paper 1



AP2 Week Beginning 2nd Feb– February Mock Exams

- All subject heads of department have detailed your upcoming mock content. This is on the school website under assessment information.
- If you're not sure **WHAT** your mocks will be on, **ASK!**

Assessment information



What else do you need to know?

- School uniform **MUST** be worn during exams
- Pens and pencils must be in a **CLEAR** case
- You are **NOT** permitted to wear watches or take in your phones
- Water is permitted in a clear bottle, but labels **MUST** be removed
- You can **ONLY** take your calculator into an exam for which it's a requirement
- PM exams will start **PROMPTLY** at 1.30. **THIS MEANS THERE WILL BE TIME FOR A TOILET BREAK ONLY, NO POD FOOD BRK 2.**



During the exam

- You cannot leave once the exam has started
- Invigilators are Staff members
- Put your hand up
- Listen to what they tell you at the start of the exam
- They cannot help you with the questions!



When the exam finishes

- Please sit quietly while your papers are collected
- Please leave in a sensible and safe manner
- During mocks, you are expected to go back to your lessons. **THIS IS NOT OPTIONAL AND YOUR TEACHERS WILL BE OUTSIDE THE SPORTS' HALL.**



Public Exams

EXAMS EQUIPMENT CHECKLIST

WHAT TO BRING

Clear pencil case or plastic bag



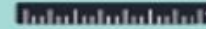
Black pens (not gel pens)



Pencils



Ruler, marked in cm and mm



Rubber



Pencil sharpener



FOR MATHS:
Protractor and compass



FOR MATHS
(Paper 2),
SCIENCES and
GEOGRAPHY:
Calculator



FOR DT:
Coloured pencils



UNAUTHORISED MATERIALS

WHAT NOT TO BRING

Mobile phones



iPods/Mp3/4
players



Smart watches



Any other device
that can be used
to communicate,
store data or
connect to the
internet



Notes



Tipp-Ex or other
correction fluids
or tape



Food and drink,
except water in a
clear bottle with
the label removed



Possession of unauthorised materials
can lead to **DISQUALIFICATION!**







DOWNLOAD

EXAM TIMETABLE

EXAM ENTRIES

EXAM RESULTS

19 days, 22 hours and 22 minutes until the start of HisB History GCSE Mock B (Hist B) exam

Date & Start Time ⚡	Board & Level ⚡	Code & Exam ⚡	Room ⚡	Seat ⚡	Duration ⚡
02 Feb 2026 9:30 AM	DOM Loc/B	HisB (HisB) History GCSE Mock B (Hist B)	Sports Hall	R8	2hr 00m
03 Feb 2026 1:30 PM	DOM Loc/B	Mat1 (MP1H) Maths GCSE P3 (Maths EDEXCEL Paper 1)	Sports Hall	Q5	1hr 30m
04 Feb 2026 9:30 AM	DOM Loc/B	En (En) English GCSE	Sports Hall	P8	1hr 45m
04 Feb 2026 1:30 PM	DOM Loc/B	Mat1 (MH2a) Maths GCSE P3 (Maths EDEXCEL Paper 2HA)	Sports Hall	Q5	1hr 30m
05 Feb 2026 9:30 AM	DOM Loc/B	BtecC (BtecC) Btec D Sport	Sports Hall	B11	1hr 30m
06 Feb 2026 9:30 AM	DOM Loc/B	Lit1 (Lit1) English Lit	Sports Hall	G7	2hr 15m



Exam Timetable

Downloaded from EduLink One: 13/01/2026 11:08AM

Title	Date	Time	Room	Seat	Duration
History GCSE Mock B (Hist B) DOM - Locl/B	02/02/2026	09:30AM	Sports Hall	R8	2hr 00m
Maths GCSE P3 (Maths EDEXCEL Paper 1) DOM - Locl/B	03/02/2026	01:30PM	Sports Hall	Q5	1hr 30m
English GCSE DOM - Locl/B	04/02/2026	09:30AM	Sports Hall	P8	1hr 45m
Maths GCSE P3 (Maths EDEXCEL Paper 2HA) DOM - Locl/B	04/02/2026	01:30PM	Sports Hall	Q5	1hr 30m
Btec D Sport DOM - Locl/B	05/02/2026	09:30AM	Sports Hall	B11	1hr 30m
English Lit DOM - Locl/B	06/02/2026	09:30AM	Sports Hall	G7	2hr 15m
Religious Education A (Religious Education A1) DOM - Locl/B	09/02/2026	09:30AM	Sports Hall	H11	1hr 45m
Maths GCSE P3 (Maths EDEXCEL Paper 3c) DOM - Locl/B	09/02/2026	01:30PM	Sports Hall	Q5	1hr 30m
Drama Block C DOM - Locl/B	10/02/2026	09:30AM	Sports Hall	R3	1hr 45m
Sport 3 (Dev.Fitness Imp.Particip.) EDEXL/GCSE - BTEC/1&2	07/05/2026	09:30AM	TBA	TBA	1hr 30m
English Literature (English Literature Paper 1) AQA - GCSE/9FC	11/05/2026	09:30AM	TBA	TBA	1hr 45m
Mathematics Option H (Non Calculator (H)) EDEXL/GCSE - GCSE/9FC	14/05/2026	09:30AM	TBA	TBA	1hr 30m
History GC (History Paper 1A &1B Option B) AQA - GCSE/9FC	15/05/2026	09:30AM	TBA	TBA	2hr 00m
History GC (Ignore this line) AQA - GCSE/9FC	15/05/2026	09:30AM	TBA	TBA	
English Literature (English Literature Paper 2) AQA - GCSE/9FC	19/05/2026	09:30AM	TBA	TBA	2hr 15m



FINAL DATES

Year 11 Celebration Day: Friday 1st May

Year 11 Study Leave: Friday 22nd May (Half Term)

Public Exams:

Students are expected to arrive for their morning exams by **9am**. They are expected to arrive for their afternoon exams by **1pm**.

From Monday 1st June, students are **not expected in school unless they have a public exam or scheduled revision session** (the timetable for these sessions will be published in due course).



Revision Plan

Revision takes time (not just a quick read of a book the night before)

A revision plan makes sure students give themselves enough time to cover everything and that they do not underload or overload themselves.

Revision should be carried out in blocks of roughly 45 minutes and you should factor in time for a break.



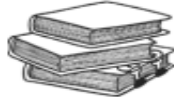
A revision plan looks something like this...

WEEKLY REVISION PLANNER

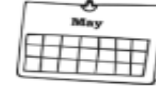
TIME	MONDAY	TUESDAY	WEDNESDAY	THURSDAY	FRIDAY	TIME	SATURDAY	SUNDAY
8:30AM - 4PM	SCHOOL	SCHOOL	SCHOOL	SCHOOL	SCHOOL	9AM - 10AM	BREAKFAST / SHOWER	BREAKFAST / SHOWER
4PM - 5PM	HOMEWORK	TV / GAMING / SOCIAL MEDIA	HOMEWORK	TV / GAMING / SOCIAL MEDIA	HOMEWORK	10AM - 11AM	REVISION - ENGLISH	REVISION - SCIENCE
5PM - 6PM	DINNER	DINNER	DINNER	DINNER	DINNER	11AM - 1PM	SEEING FRIENDS / LUNCH	SPORT / LUNCH
6PM - 7PM	REVISION - GEOGRAPHY	HOMEWORK	REVISION - HISTORY	REVISION - FRENCH	REVISION - SCIENCE	1PM - 3PM	REVISION - MATHS	REVISION - FLASH CARDS
7PM - 8PM	REVISION - MATHS	REVISION - ENGLISH	FREE TIME	HOMEWORK	FREE TIME	3PM - 5PM	OUT WITH FAMILY	SPORT / TV / GAMING
8PM - 9PM	FREE TIME / SHOWER	FREE TIME / SHOWER	FREE TIME / SHOWER	FREE TIME / SHOWER	FREE TIME / SHOWER	6PM - 8PM	DINNER / FREE TIME	DINNER / FREE TIME



A revision plan looks something like this...



Revision Planner



	Monday	Tuesday	Wednesday	Thursday	Friday	Saturday	Sunday
Morning	<hr/> <hr/> <hr/> <hr/>	<hr/> <hr/> <hr/> <hr/>	<hr/> <hr/> <hr/> <hr/>	<hr/> <hr/> <hr/> <hr/>	<hr/> <hr/> <hr/> <hr/>	<hr/> <hr/> <hr/> <hr/>	<hr/> <hr/> <hr/> <hr/>
Afternoon	<hr/> <hr/> <hr/> <hr/>	<hr/> <hr/> <hr/> <hr/>	<hr/> <hr/> <hr/> <hr/>	<hr/> <hr/> <hr/> <hr/>	<hr/> <hr/> <hr/> <hr/>	<hr/> <hr/> <hr/> <hr/>	<hr/> <hr/> <hr/> <hr/>
Evening	<hr/> <hr/> <hr/> <hr/>	<hr/> <hr/> <hr/> <hr/>	<hr/> <hr/> <hr/> <hr/>	<hr/> <hr/> <hr/> <hr/>	<hr/> <hr/> <hr/> <hr/>	<hr/> <hr/> <hr/> <hr/>	<hr/> <hr/> <hr/> <hr/>



A revision plan looks something like this...



Weekly Revision Planner

	Monday	Tuesday	Wednesday	Thursday	Friday	Saturday	Sunday
Topic							
Relaxation (10 minutes)							
Topic							
Relaxation (10 minutes)							
Topic							
Relaxation (10 minutes)							
Topic							
Relaxation (10 minutes)							



Suggested Revision Strategies

CORNELL NOTES

The Cornell Notes system is a structured way to take and review notes, helping with comprehension and retention.

FLASH CARDS

Flashcards force you to actively retrieve information from memory, which strengthens learning more than passive reading.

LCWC (LOOK, COVER, WRITE CHECK)

You get immediate feedback; by checking what you wrote against the correct answer, you can quickly spot and correct mistakes.

ST PETER'S REVISION

KNOWLEDGE ORGANISERS

You can use KOs for self-testing, recall, and revision

REVISION CLOCKS

Each "hour" represents a key fact, concept, or topic, breaking large amounts of information into manageable pieces.

POMODORO

Breaks work into short, timed intervals (usually 25 minutes), reducing distractions and helping maintain concentration.



How to revise?

Active Revision

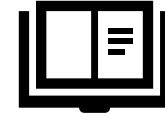
Reading notes or highlighting exercise books *has been shown to have little impact on learning.*

Revision strategies need to be as active as possible, aiming to challenge the brain to remember and apply knowledge.



How to revise?

- Reading a chapter of a text book and then put it away before writing a summary of what's been read.



- Answering a practice question, but doing it without using the revision guide for help.



- Teaching someone at home! Studies have shown that this will improve memory and recall; you have to really understand something, in order to explain it properly to someone else!

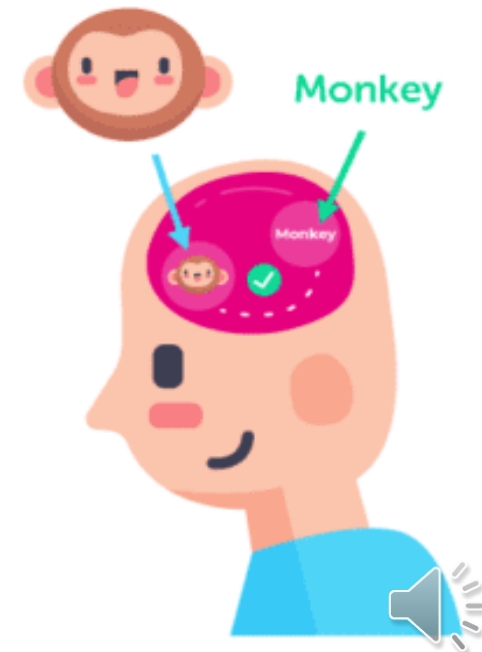
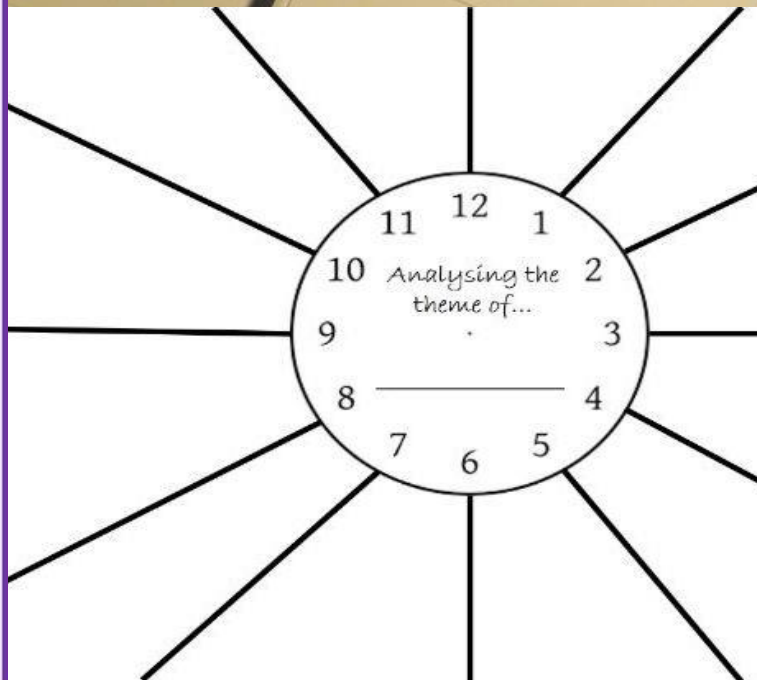
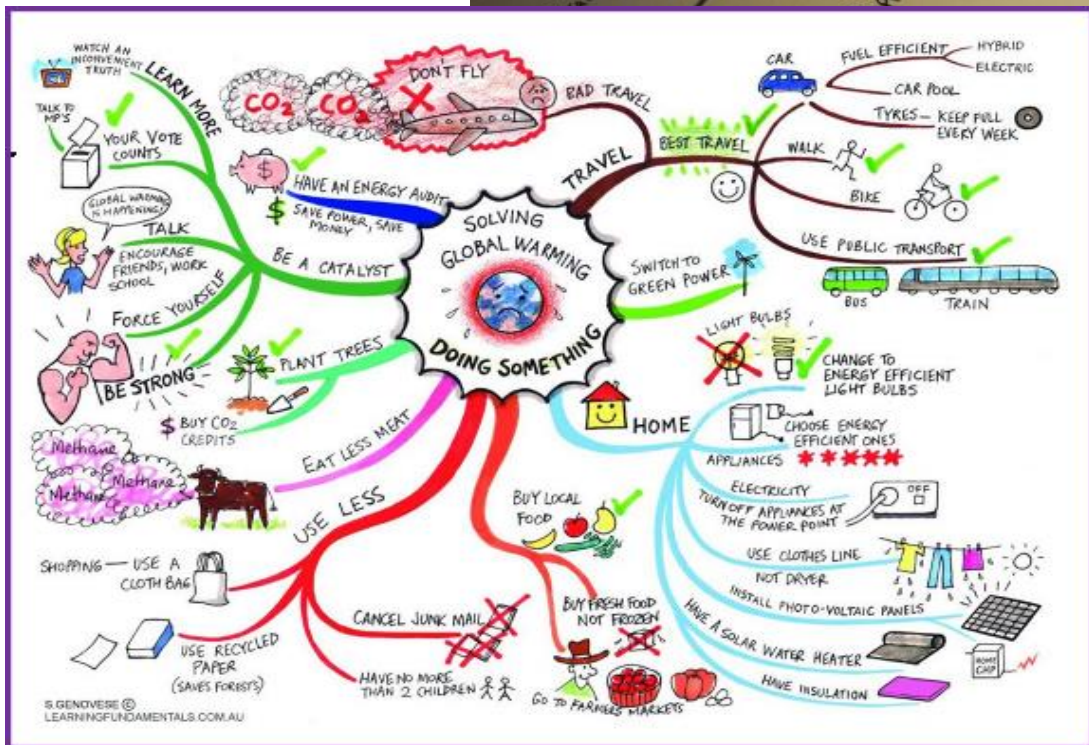
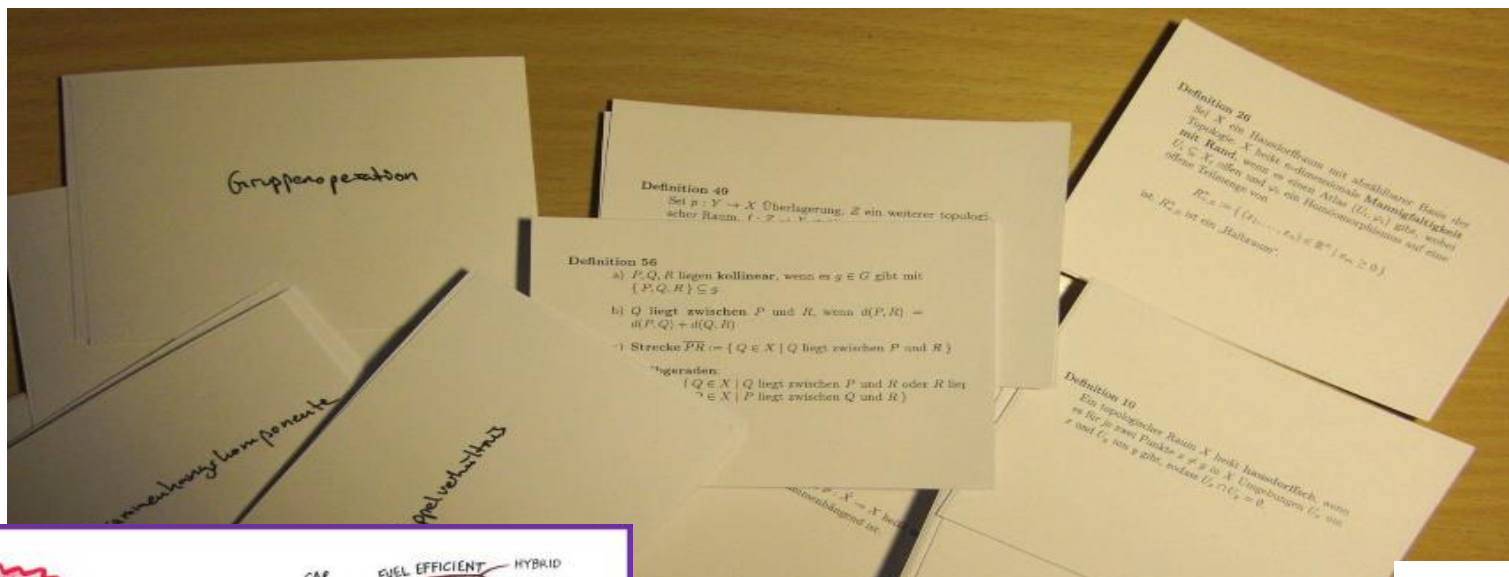


Good old fashioned exam practice

- How many questions on each paper?
- How long should you aim to spend on each question?
- How many marks are available and for what?
- **PRACTISE** with past papers **IN TIMED CONDITIONS**
- Students can **MAKE** their own questions...

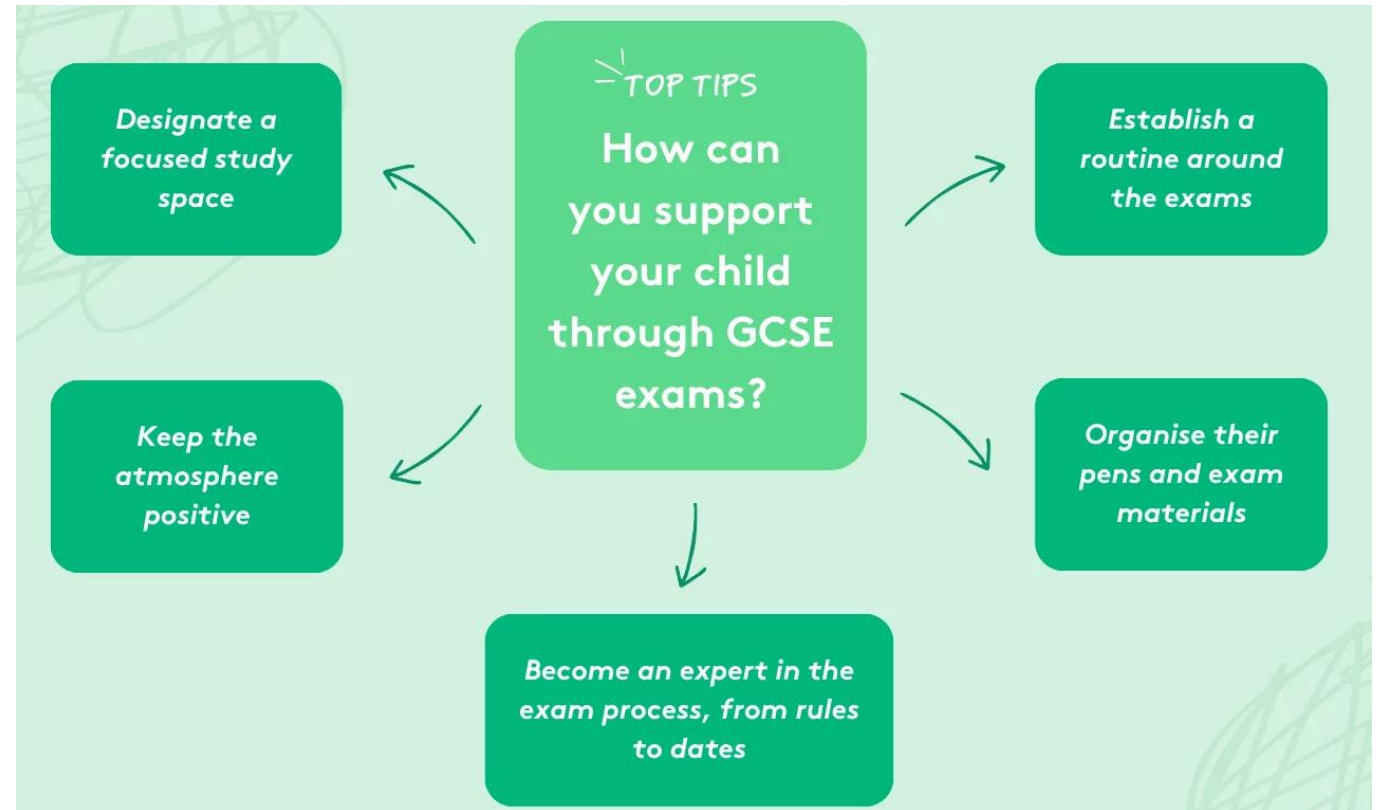


Mind maps, Flashcards, Revision clocks, Dual coding



Final thoughts: How can you best prepare your child for their upcoming exams?

- Students need a quiet a quiet place to work without distraction!
- Encourage rest breaks - remember the 45 minute golden rule.
- Getting exercise and good sleep habits is important too – healthy body, healthy mind!
- Mobile phones!!!



Study Space

Students need a quiet a quiet place to work without distraction.

In school from next week, room G005 will be free as a quiet study space at break 1.

There is also homework club, which runs in the 6th form learning centre each day after school until 16.45.



KS4 STUDY SPACE

- > QUIET SPACE FOR FOCUSED WORK
- > SUPPORT TO ACHIEVE YOUR BEST
- > CONFIDENCE FOR EXAMS

11.30-12.15
ROOM G005

SUCCESS DOESN'T HAPPEN BY CHANCE.
CHOOSE TO SUCCEED. CHOOSE TO STUDY.



The logo is a shield-shaped crest with a white background and a green border. Inside the shield, there are two crossed keys (a golden key and a silver key) and a cross. Below the shield, there is a banner with the text 'TU ES PETRUS' and 'Key Stage 4'. At the bottom of the banner, it says 'ST. PETERS R.C. HIGH SCHOOL'.





School Support

Mrs Sewell – Vice Principal – Teaching and Learning & Exams - lsewell@sphs.uk.com

Mrs Chaloner - Head of KS4 - cchaloner@sphs.uk.com

Mr Versaci – Head of Year 11 - jversaci@sphs.uk.com

Mrs Maddern – Exams Officer - exam@sphs.uk.com

